

MainRoads

Sunshine Coast Multi-Modal Transport Corridor

Fact Sheet #4

Sustainability

The provision of multiple modes of transport connecting key areas can contribute to the achievement of environmental, social and economic sustainability.

Embedding sustainability in design

The Multi-Modal Transport Corridor (MMTC) will influence transport patterns on the Sunshine Coast for generations. Main Roads is planning the project to facilitate the use of sustainable transport. Sustainability will be central to the design and construction process, not just an 'add on' at the end.

Sustainability specialists have been appointed to the project team. They are working with designers and engineers to help them consider the sustainability implications of design decisions.

sustainable transport modes, which connects to key destinations, will allow people to make sustainable choices for everyday travel. This will minimise the demand and need for new road projects in future. In fact, it should increase demand for sustainable transport.

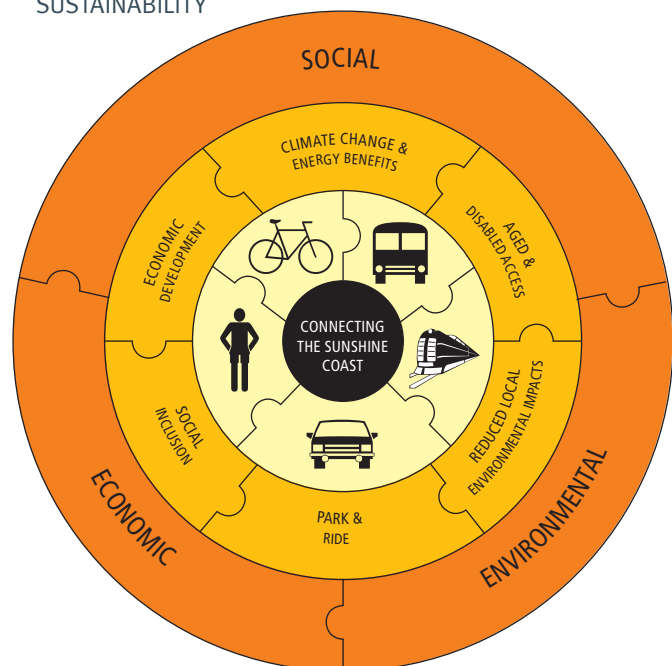
Increased use of sustainable transport will reduce traffic congestion on the southern Sunshine Coast. Lower congestion will result in more efficient running of vehicle engines which minimises the emission of greenhouse gases and other pollutants.

Environmental benefits

The MMTC has the potential to provide long term environmental benefits by supporting sustainable transport options. It can be designed to allow for a range of transport modes including pedestrians, bicycles, buses and passenger rail, as well as private and commercial motor vehicles. Increased use of bicycles and public transport will result in significantly lower greenhouse gas emissions, relative to a standard road project.

Most road projects suffer from the 'induced demand' phenomenon. Building roads provides an incentive to drive cars which leads to further congestion and pollution, and the need to build more roads. The provision of infrastructure for multiple

SUSTAINABILITY



MainRoads

Sunshine Coast Multi-Modal Transport Corridor

Social benefits

The MMTC has the potential to provide a range of benefits to the Sunshine Coast community.

The project can provide improved connectivity between key destinations on the Sunshine Coast, including beaches, commercial centres, the airport, schools, the university and the new hospital. Movement between Brisbane and the Sunshine Coast should become quicker and easier once the corridor is fully operational.

Increased use of active transport options, such as cycling, running and walking will contribute to improved health and increased social interaction. A dedicated pedestrian/cycle facility will allow people to avoid roads with large volumes of vehicular traffic. The increased levels of social activity and interaction can help promote higher levels of safety within the community by improving surveillance of public spaces and residential areas.

Incorporation of multiple transport modes may also facilitate greater community inclusion by

enhancing the ability for people without private motor vehicles, including the aged and disabled, to travel to key destinations.

Economic benefits

MMTC will provide a range of indirect economic benefits for the Sunshine Coast region. Greater ease of movement across the coast as a result of better public transport options, will contribute to the Sunshine Coast becoming a more popular tourist destination for tourists who do not have their own motor vehicles, such as international and interstate tourists.

Greater connectivity and ease of movement between residential areas and major commercial districts will make it easier to access shopping facilities and services, providing stimulus to local businesses and the regional economy.

Reduced transport costs will provide economic benefits along the supply chain for goods produced on the Coast or imported from other regions.

Freecall: 1800 662 744
Email: mmtc@skm.com.au
Write: MMTC Planning
Reply Paid 3848
SOUTH BRISBANE QLD 4101
(no stamp required)
Fax: (07) 3026 7575 – Attention: MMTC Consultation

For more information visit www.mainroads.qld.gov.au (search for “MMTC”)